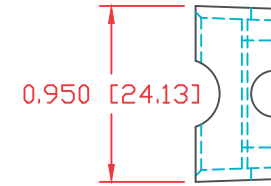
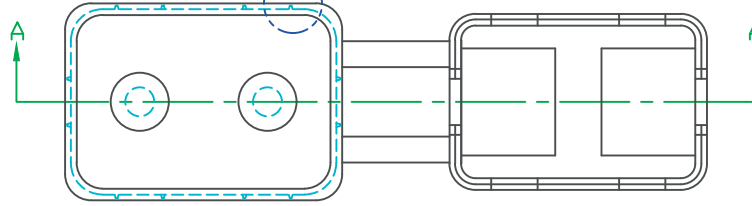
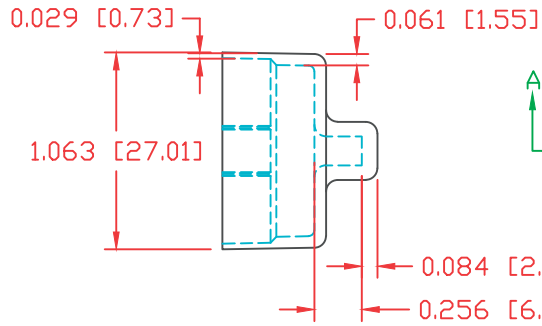
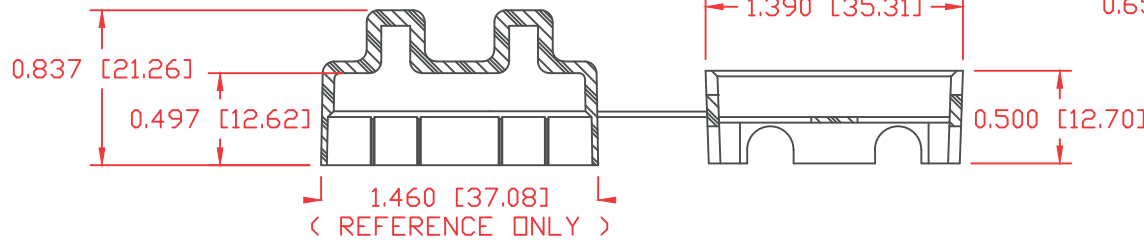


TYP. WALL THICKNESS = 1.5

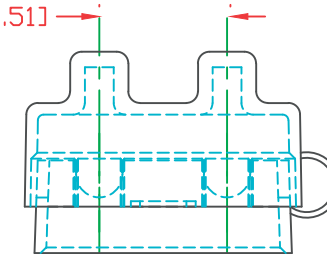
SEE VIEW "B"



VIEW "B"  
SCALE: 4" = 1"  
TEARABLE FLAP SEAM



SECTION A-A



PART NO.: 907201

STUD MOUNT CIRCUIT BREAKER INSULATOR, RED (1 MIN)

MATERIAL PART NO 1101700102

MATERIAL PVC

VENDOR PART NO 7843-70-RED 6288

SHORE DUROMETER "A" 10 SEC. 70

SPECIFIC GRAVITY 1.34

ULT. ELONGATION % 350

MELTING TEMP 320-340° F [160-171° C]

BRITTLE TEMP -22° F [-30° C]

TENSILE STRENGTH PSI 1550 PSI

DIELECTRIC STRENGTH, V/MIL 553

UL RATING V0

DIAGRAM NOT TO SCALE